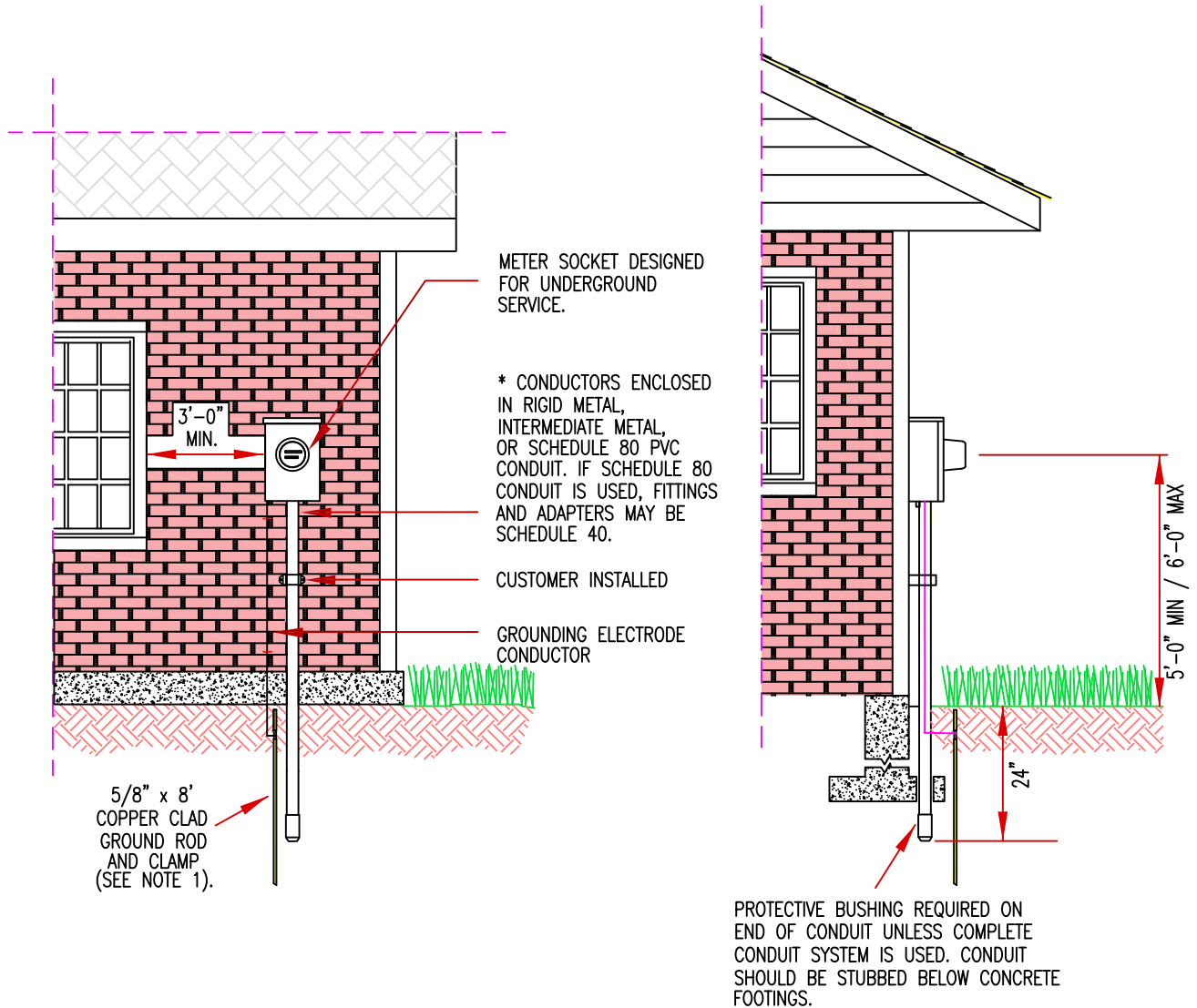


FRONT VIEW

SIDE VIEW



Notes:

1. A single ground electrode shall be supplemented by an additional electrode except when the single electrode has a resistance to earth of 25 ohms or less.
2. Drawing and recommendations are intended to serve as guidance for compliance with code and utility requirements. The NEC and/or Local Code Authorities may have additional requirements to those shown. The more stringent requirement will take precedence for differences between authorities.



UNDERGROUND SERVICE TO STRUCTURE

DATE	REVISION	DRAWN	CHECK	DATE	FILE NAME
08/18/16	CHANGED COMPANY LOGO	CLJ	JLJ	JAN. 2016	UG TO STRUCT.
		SCALE		SHEET	ASSEMBLY
		NOT TO SCALE		1 OF 1	N/A